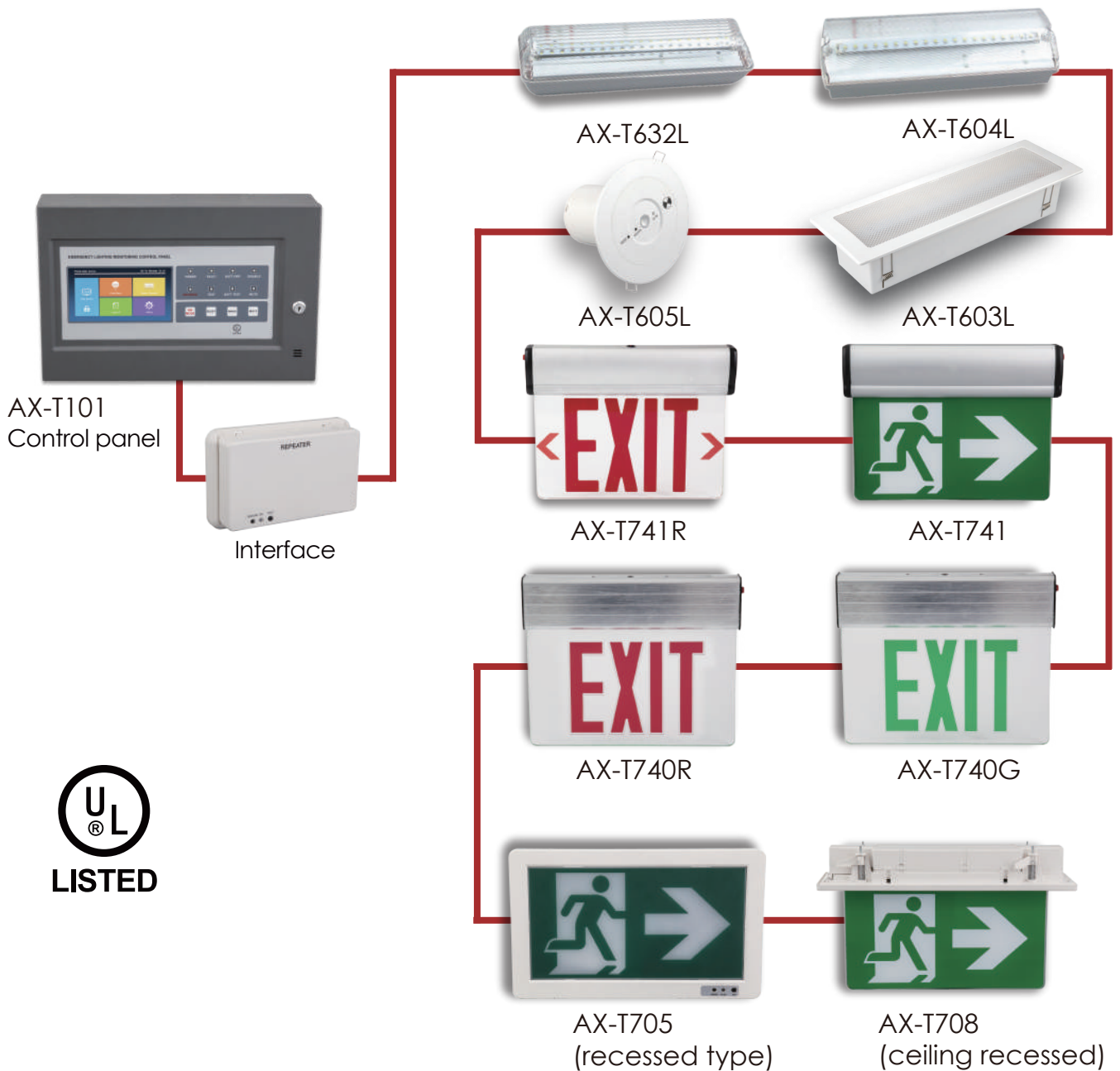


EMERGENCY LIGHTING CENTRAL MONITORING SYSTEM



Features:

- The Emergency Lighting Monitoring Control Panel has a 7-inch colorful touch screen, offering excellent man-machine interaction experience.
- Controlled by sound and light, the integrated controller automatically conducts real-time and efficient testing and inspection of operating states and faults of emergency lights. Events will be recorded and history can be retrieved.
- Logs can be displayed. History events can be viewed on the screen and imported into the computer.
- Timed automatic testing, which can test lights' emergency functions according to the set time period.
- Timed battery maintenance, which can charge and discharge batteries according to the set time period so as to prolong the battery life.
- Emergency Lighting Monitoring Control Panel and interfaces are connected by CAN bus. The interface and its subordinate devices are connected by RS485 bus. The layout is simple and the cost is low. Maximum 64 interfaces within a system, with each connecting up to 254 devices.
- The emergency state will be triggered when external fire signals are received by the controller.

EMERGENCY LIGHTING CENTRAL MONITORING SYSTEM



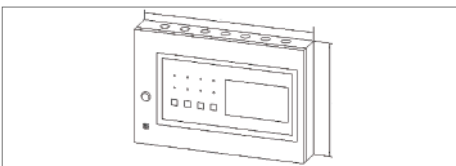
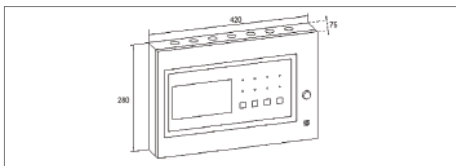
AX-T101

Features:

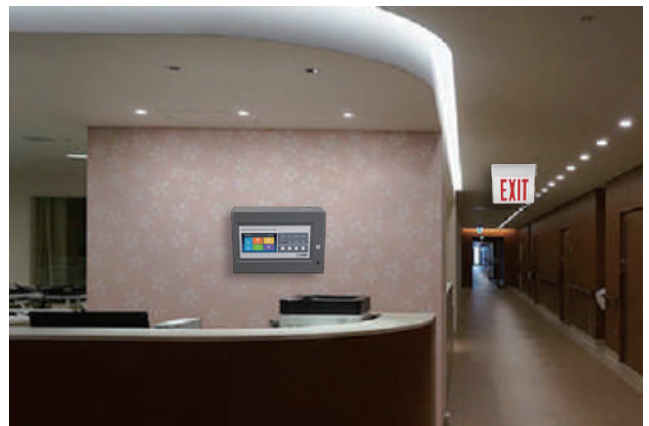
- UL/cULs Listed UL924
- Emergency Lighting addressable control panel
- Metal case +7-inch colorful touch screen
- Panel buttons and indicator lights
- RS485 and CAN bus communication
- Universal wall mounting
- 24 hours charging time
- Panel dimension : 420X280X75mm

Application:

- Working Temperature : -5°C~45°C
- Working Humidity: <90%



CENTRAL MONITORING EMERGENCY LIGHT CONTROL PANEL



Item No.	Voltage	AC Power	Battery	Emergency Duration	Communication bus
AX-T101	AC100-240V / 0.18A 50/60Hz	10W	1.4Ah/12V*2	3 Hours	CAN bus

Accurex Fire Systems

Kingsfordweg 151, 1043GR Amsterdam, The Netherlands, www.accurexfiresystems.com, info@accurexfiresystems.com

EMERGENCY LIGHTING CENTRAL MONITORING SYSTEM



AX-INT01



AX-REP01

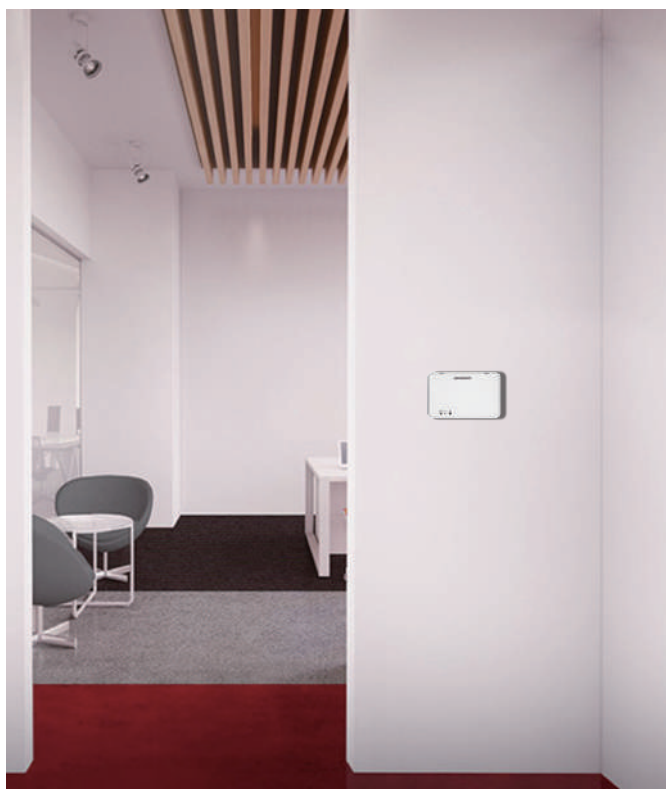
INTERFACE UNIT

Features:

- UL/cULs Listed UL924
- UL 5VA flame rating
- Addressable interfaces
- RS485 and CAN bus communication
- Universal wall or ceiling mounting
- 24 hours charging time
- Battery over charge & discharge protection
- Charging LED indicator and test button

Application:

- Working Temperature : -5C~45 °C
- Working Humidity: <90%

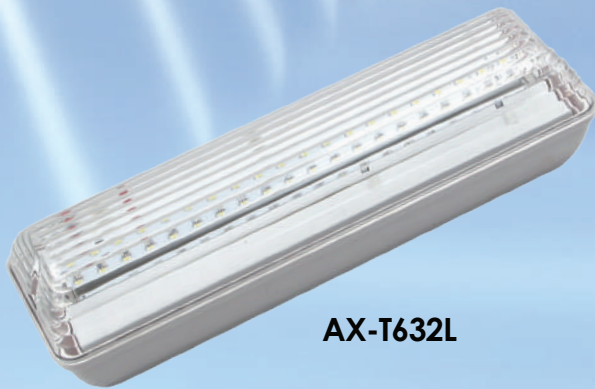


Item No.	Voltage	AC Power	Battery	Emergency Duration	Communication bus
AX-INT01 (Interface)	AC120V/0.035A or AC277/0.016A 50/60Hz	3W	Ni-MH AA 600MAH/4.8V	3 Hours	CAN bus AND 485 BUS
AX-REP01 (Repeater)	AC120V/0.035A or AC277/0.016A 50/60Hz	3W	Ni-MH AA 600MAH/4.8V	3 Hours	485 bus

Accurex Fire Systems

Kingsfordweg 151, 1043GR Amsterdam, The Netherlands, www.accurexfiresystems.com, info@accurexfiresystems.com

EMERGENCY LIGHTING CENTRAL MONITORING SYSTEM



AX-T632L



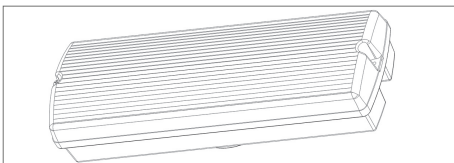
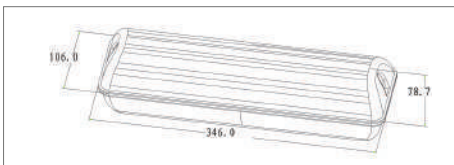
AX-T604L

Features:

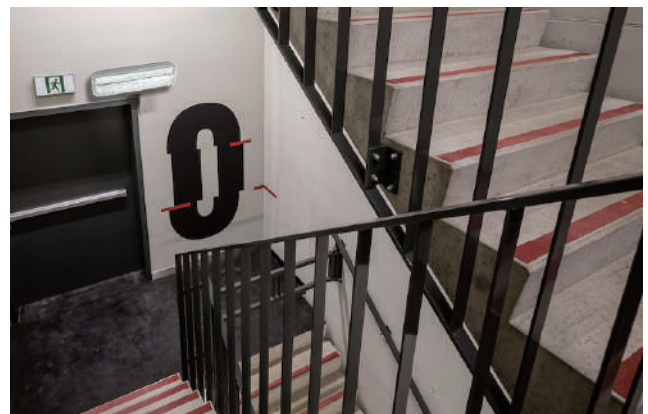
- UL/cULs Listed UL924
- UL 5VA flame rating
- Addressable luminaires
- RS485 bus communication
- Long life LED Lighting
- Universal wall or ceiling mounting
- Energy saving, reliable and safety
- 24 hours charging time
- Battery over charge & discharge protection
- Charging LED indicator and test button

Application:

- Working Temperature : -5 °C ~45 °C
- Working Humidity: <90%
- Used in commercial/Residential areas



SURFACE MOUNTED EMERGENCY LIGHT

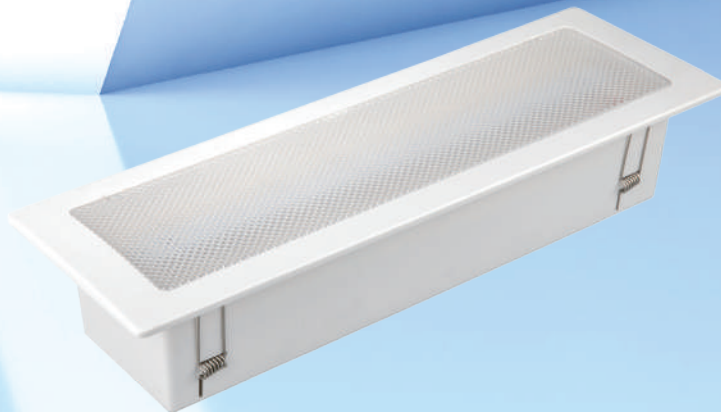


Item No.	Voltage	AC Power	Battery	Emergency Duration	Communication bus	Lighting Source
AX-T632L	AC120V/277V 50/60Hz	5.5W	Ni-MH SC 2200MAH/4.8V	3 Hours	485 bus	20pcs, SMD2835
AX-T604L	AC120V/277V 50/60Hz	5.5W	Ni-MH SC 2200MAH/4.8V	3 Hours	485 bus	20pcs, SMD2835

Accurex Fire Systems

Kingsfordweg 151, 1043GR Amsterdam, The Netherlands, www.accurexfiresystems.com, info@accurexfiresystems.com

EMERGENCY LIGHTING CENTRAL MONITORING SYSTEM



AX-T603L



AX-T605L

RECESSED TYPE EMERGENCY LIGHT

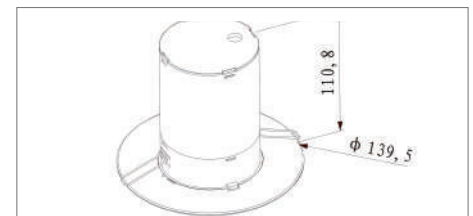
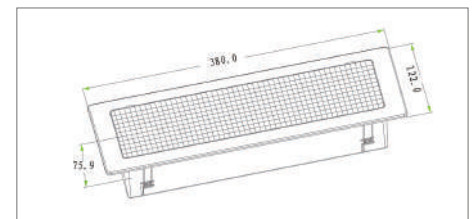


Features:

- UL/cULs Listed UL 924
- Universal wall or ceiling mounting
- Longlife, high brightness
- Energy saving, reliable and safety
- Easy installation and maintenance
- 24hours charging time
- Battery Overcharge&discharge protection
- Charing LED indicator and test button

Application:

- Working Temperature: -5C~45C
- Working Humidity: <90%
- Used in Commerical/Residential areas



Item No.	Voltage	AC Power	Battery	Emergency Duration	Communication bus	Lighting Source
AX-T603L	100-240V AC 50/60Hz	3W	NI-MH SC 2200MAH/4.8V	≥3 Hours	485 bus	20pcs, SMD2835
AX-T605L	100-240V AC 50/60Hz	3W	NI-MH SC 2200MAH/4.8V	≥3 Hours	485 bus	20pcs, SMD2835

Accurex Fire Systems

Kingsfordweg 151, 1043GR Amsterdam, The Netherlands, www.accurexfiresystems.com, info@accurexfiresystems.com

EMERGENCY LIGHTING CENTRAL MONITORING SYSTEM



AX-741R/G



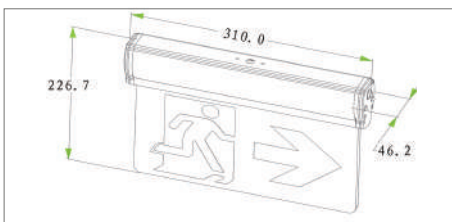
AX-T741

Features:

- UL/cULs Listed UL924
- Aluminum housing with high grade acrylic panel
- Addressable EXIT SIGN
- RS485 bus communication
- Single face configuration
- Long life LED Lighting
- Universal wall ,side or ceiling mounting
- Remove able arrows
- 24 hours charging time
- Battery over charge & discharge protection

Application :

- Working Temperature : -5 °C ~45 °C
- Working Humidity: <90%
- Used in commercial/Residential areas



price base on one graphics ,light graphics opinion



WALL MOUNTED EXIT LIGHT



Item No.	Voltage	AC Power	Battery	Emergency Duration	Communication bus	Lighting Source
AX-T741R/G	AC120V/277V 50/60Hz	3.5W	Ni-MH SC 600MAH/4.8V	3 Hours	485 bus	8pcs,Φ5
AX-T741	AC120V/277V 50/60Hz	3.5W	Ni-MH SC 600MAH/4.8V	3 Hours	485 bus	14 pcs, SMD2835

Accurex Fire Systems

Kingsfordweg 151, 1043GR Amsterdam, The Netherlands, www.accurexfiresystems.com, info@accurexfiresystems.com

EMERGENCY LIGHTING CENTRAL MONITORING SYSTEM



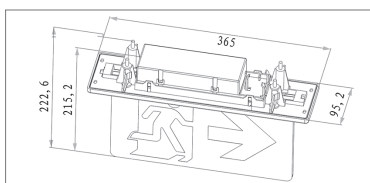
**AX-T708
(CEILING RECESSED)**

Features:

- UL/cULs Listed UL924
- UL 5VA flame rating
- Addressable EXIT SIGN
- RS485 bus communication
- Single face configuration
- Long life LED Lighting
- Universal ceiling flush mounting
- Remove able arrows
- 24 hours charging time
- Battery over charge & discharge protection
- Charging LED indicator and test button

Application :

- Working Temperature : -5 C ~45 C
- Working Humidity: <90%
- Used in commercial/Residential areas



1: LX-T708 price base on one graphics, light graphics opinion



RECESSED TYPE HANGING EXIT LIGHT



Item No.	Voltage	AC Power	Battery	Emergency Duration	Communication bus	Lighting Source
AX-T708 (ceiling recessed)	AC120V/277V 50/60Hz	3.5W	NI-MH AA 600MAH/4.8V	3 Hours	485 bus	14pcs, SMD2835

Accurex Fire Systems

Kingsfordweg 151, 1043GR Amsterdam, The Netherlands, www.accurexfiresystems.com, info@accurexfiresystems.com

EMERGENCY LIGHTING CENTRAL MONITORING SYSTEM



AX-T741

Features:

- UL/cULs Listed UL924
- Aluminum housing with high grade acrylic panel
- Addressable EXIT SIGN
- RS485 bus communication
- Single face configuration
- Long life LED Lighting
- Universal wall ,side or ceiling mounting
- Remove able arrows
- 24 hours charging time
- Battery over charge & discharge protection

Application :

- Working Temperature : -5 °C ~45 °C
- Working Humidity: <90%
- Used in commercial/Residential areas



price base on one graphics, light graphics opinion



SURFACE MOUNTED HANGING EXIT LIGHT



Item No.	Voltage	AC Power	Battery	Emergency Duration	Communication bus	Lighting Source
AX-T741	AC120V/277V 50/60Hz	3.5W	Ni-MH SC 600MAH/4.8V	3 Hours	485 bus	14 pcs, SMD2835

Accurex Fire Systems

Kingsfordweg 151, 1043GR Amsterdam, The Netherlands, www.accurexfiresystems.com, info@accurexfiresystems.com